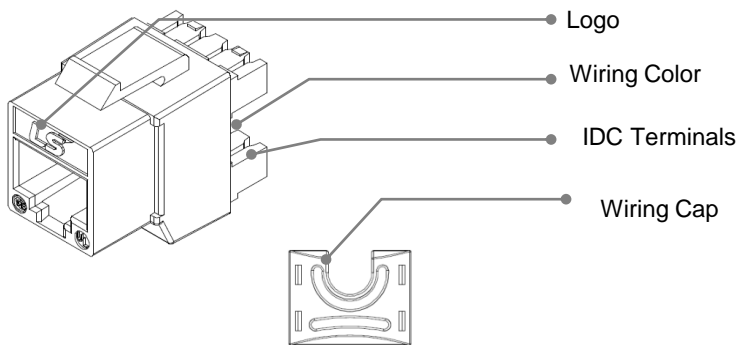


## LS-MJ-UC5E-xx-RIDC

V0.1



## Description

**LS Simple™** Unshielded Modular Jack(RIDC) be used for Faceplate, System Box & Patch Panel etc. They are designed and manufactured to meet today's and tomorrow's demanding international standards & take into consideration the need for reliable and quick installations by using special E-Tool(LS-EZT-TOOL-FR). The Jack is individually terminated using slim-Insulation Displacement Connectors (IDC) giving assurance of wire connection. They user instructions and basic wiring layout for standard configuration are included.

- Comes with the ability to wire to a T568A or T568B configuration
- Fully complies with RJ-45 of 47 CFR part 68 & TIA/EIA 568-B.2(Category5e), ISO/IEC 11801
- RoHS compliant
- High impact flame retardant plastic Housing
- Easy & fast installation by using EZT-Tool

## Application

- Horizontal Distribution & Backbone Cabling
- 4/16 Mbps Token Ring (IEEE 802.5)
- 10/100/1000 BASE-T (IEEE 802.3)
- 155 Mbps
- 100Mbps TP-PMD
- ISDN, ADSL
- Analog & digital voice (VOIP) and video
- Full broadband and baseband video
- RoHS Compliant

## Part Numbers

Description	Dimension (H x W X D) [mm]	Part Numbers	Compatible items
Slim-Body Category5e Modular Jack 180degree IDC	19 * 14.6 * 29	LS-MJ-UC5E-xx-RIDC	P/Panel: <b>LS-PP-MD-24(48), LS-PP-24(48)P</b> series FastNet™ Panle: <b>LS-PPP</b> series Outlet: <b>LS-FP-SA(SF)(US)</b> series, Tool: <b>LS-EZT-TOOL-FR</b> , LS-STOOL,SL-TOOL-MJ

\*XX Denotes Color : WH=White, BK=Black, BL=Blue, RD=Red etc.

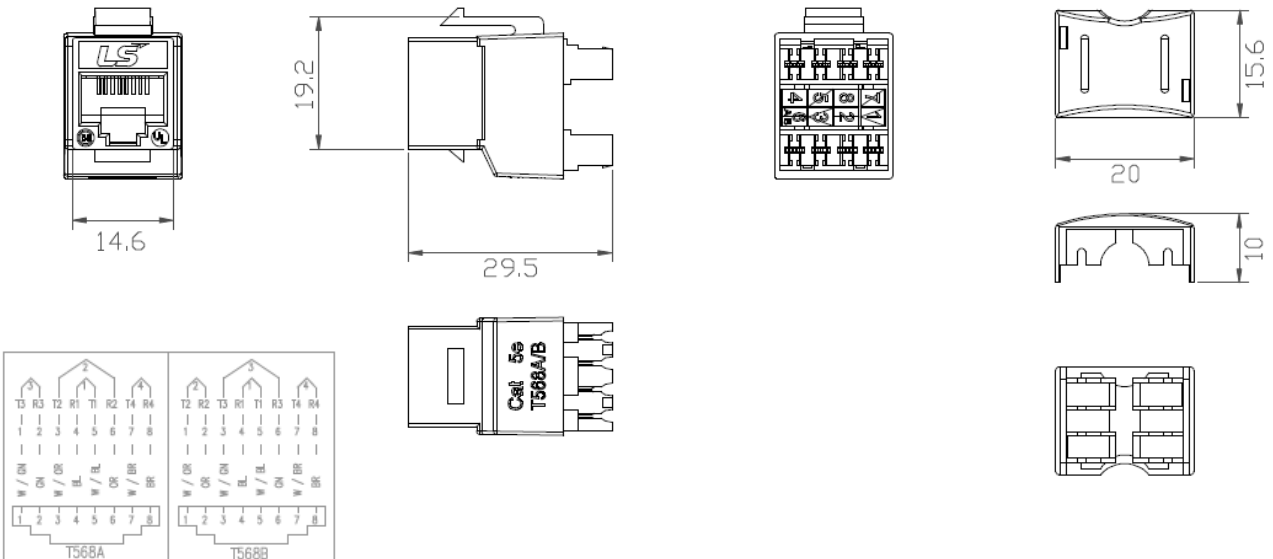
The drawing appearing on this page is not a warranty, and may be subject to change or modification without any prior notice

**LS-MJ-UC5E-xx-RIDC**

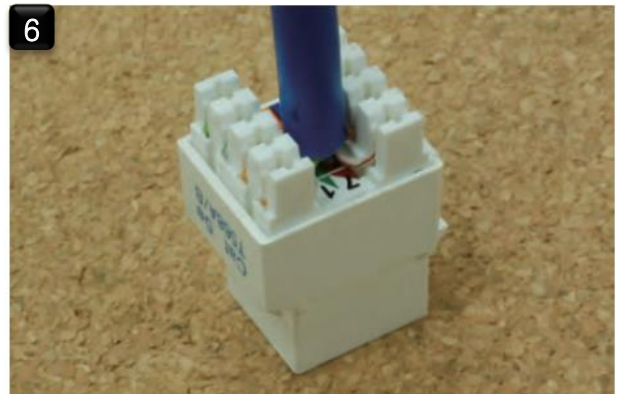
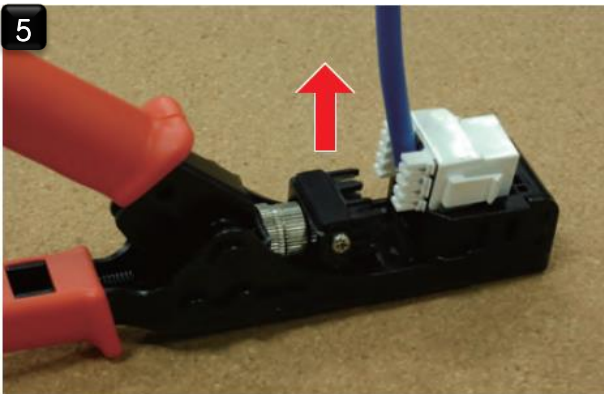
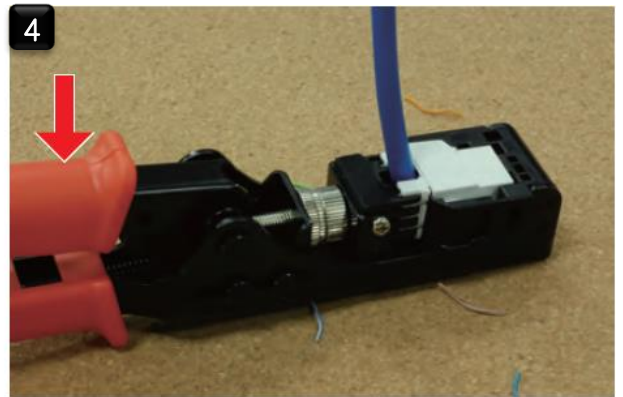
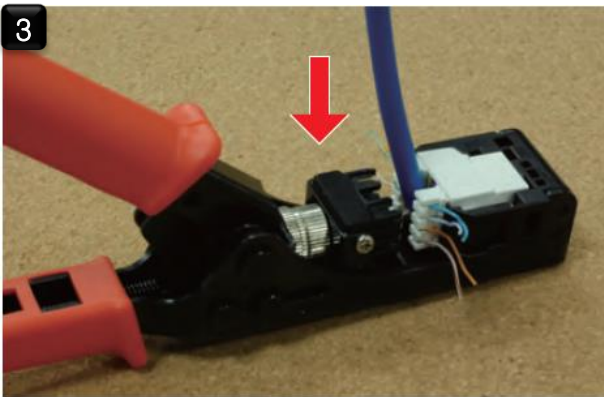
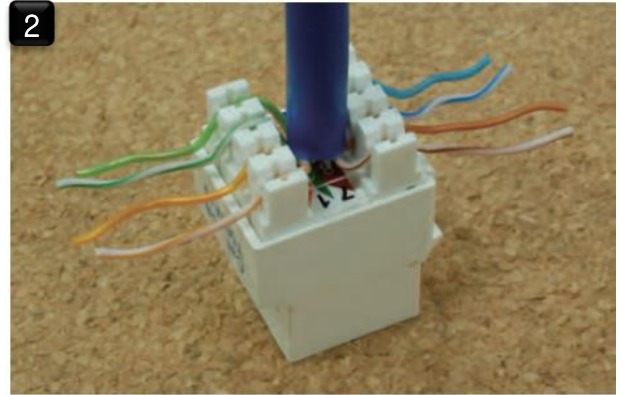
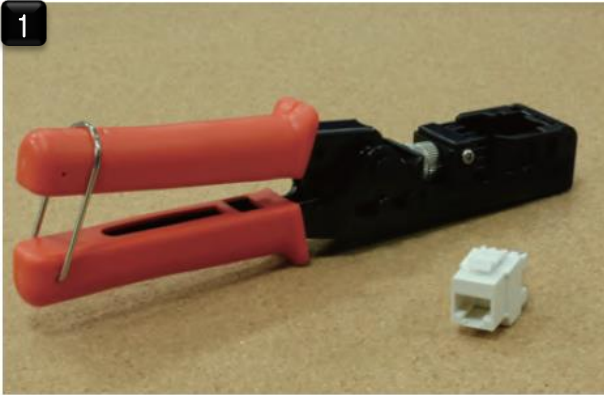
**Technical Details**

ITEM	UNIT	Information
<b>FEATURE;</b>		
Approvals	-	UL Listed
Category	-	TIA/EIA-568-C.2 Category 5e
Meet	-	FCC Parts 68
Wiring scheme	-	T568A/T568B
<b>ELECTRICAL:</b>		
Current Rating	Amps	1.5
Insulation Resistance	Mega-ohm	500 Mega-ohm
Contact Resistance	milli-ohm	< 20
DC Resistance	ohm max	< 0.1
Voltage	VAC max	< 150
<b>MECHANICAL:</b>		
Insertion Life	Mating cycles	750 mating cycles
Pull Force	lbs(N)	20lbs(89N)
Temperature	°C	-10°C ~ 60°C
Humidity	%	10% ~ 90%RH
IDC accept	AWG	22~26(Solid wire)
<b>PHYSICAL :</b>		
Cap & Housing	-	High impact flame retardant plastic, UL 94V-0
Spring Wire	-	Phosphor bronze plated with 50uin thick gold over 100uin thick nickel undercoat
IDC Plastic		Polycarbonate, UL 94V-0 rated
IDC Contact		Phosphor bronze plated with 100uin minimum thick tin

**DRAWING:**



### Easy Tool information



1. Termination tool with 180 degree LS-SC(UC)C5E(C6)-xx- RIDC series keystone jack.
2. Place the wire into the wire slots according to the wire scheme.
3. Put the Keystone Jack into the termination tool in the right position.
4. Squeeze the tool then terminate all wire and trim the excess wire at the same time.
5. Remove the Keystone Jack vertically away from the termination tool.
6. Complete